



## **BRAINERD RIVERFRONT MEETING**

Dec 6, 2018

3:00–5:00 p.m.

**Brainerd Lakes Chamber of Commerce** - 224 W Washington St  
Brainerd, MN 56401

**Our Vision – Maximize our Mississippi Riverfront by creating recreational, economic and cultural opportunities for Brainerd's residents and visitors.**

## **AGENDA**

### **1) General Updates**

- a. National Park Service Rivers Trail and Conservation Assistance Awardee
- b. BLACF Q4 funding awarded
- c. 2019 Riverfront Coordinator hours

### **2) NPS Site Visit**

- a. Team member introductions
- b. Priority project identification and technical assistance
- c. Next steps

### **3) Initiative Updates**

- a. Review legislative update packet
- b. White Park – Park name/terminology

### **4) Other**

- a. Subcommittees needed for 2019 events
- b. BRC membership – soliciting applications

## River-to-Rails – Brainerd Riverfront Resolution

Whereas the mission of Brainerd Riverfront to maximize the presence of the Mississippi River in our town by creating recreational, economic and cultural opportunities for Brainerd's residents and visitors.

Whereas the River to Rails Initiative supports Brainerd Riverfront's overall strategy of implementing the Mississippi Partners Plan of 2015, and the specific priority of creating Mississippi Landing and a trail running along the river from College Drive to Washington Street.

Whereas the River to Rails Initiative supports the mission of Brainerd Riverfront with the adoption of:

### Overall Goals

- Build Community
- Expand Business
- Grow Jobs

### Strategic Initiatives

- Develop and schedule events that create unique experiences
- Encourage and support private sector investment
- Improve the city's aesthetic to reflect the scenic natural beauty of the RTR corridor

Whereas the River to Rail Initiatives will coordinate the creation of a unified strategic implementation plan with guidance from the six committees or "engines"

Whereas the River to Rails Initiative is committed to providing communication support for Brainerd Riverfront as well as other non-profit community organizations and for profit business entities

Therefore be it resolved the Brainerd Riverfront Committee will support the River to Rails Initiative in our future work



BRAINERD RIVERFRONT

Site Plan

Zone 1 - Heart of the Community

Most developed, business district, commercial diversity, visual access. This zone extends from Washington Street south to Laurel Street and from the west bank of the Mississippi River connecting east to the downtown core.

Zone 2 - Cultural Community Commons

Semi-developed, transition zone, community gathering, parks and plazas, access to river and lake, active/very physical recreation. This zone extends from Laurel Street to College Drive along both banks of the river.

Zone 3 - Community Wilds

Least developed, naturalistic, interpretive trails, access to river and across river, passive recreation. This zone extends along both sides of the river from College Drive south to Rotary Riverside Park. This connects Brainerd to the natural and wild river that is its recreational heart.



- LEGEND**
- Gap in Pedestrian Network
  - Existing Local Trail
  - Existing State Trail
  - City Park
  - General Search Corridor



#### 4. NPS Support Requested (continued)

- b. What types of assistance are you seeking from the NPS staff that would complement your team?

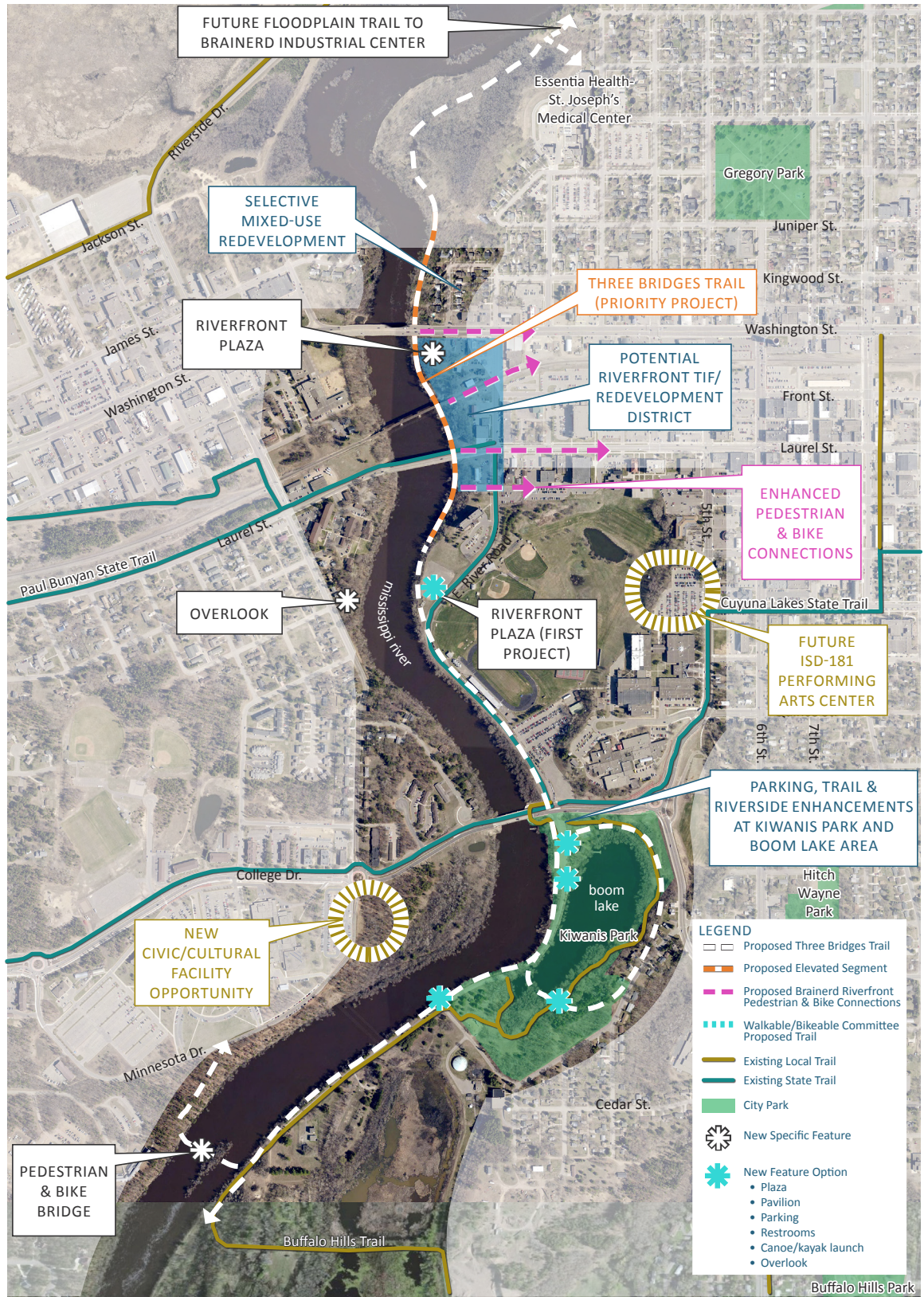
(trail-related)

Community engagement  
Funding strategies (trailhead  
sources)

#### 5. How Did You Hear About Us?

How did you hear about our program (i.e. from a colleague, online search, NPS website, Facebook, email, grants.gov, or other)?

## RIVERFRONT PROJECT IMPLEMENTATION



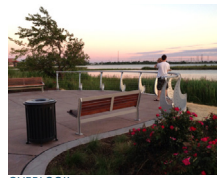
ELEVATED TRAIL



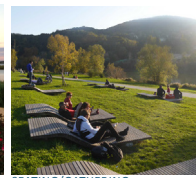
ON-GRADE TRAIL



GATHERING



OVERLOOK



SEATING/GATHERING



MARKER



## FIRST PHASE PROJECT - MISSISSIPPI LANDING TRAILHEAD

With input from the Riverfront Committee, the City, community members, and area stakeholders, the first project identified for implementation is the Mississippi Landing Trailhead located west of East River Road between Laurel Street and College Drive. The Partnership Plan also identified a feature at this location, the design of which was informed through a programming workshop facilitated by SEH with participation from members of the Riverfront Committee and City staff, including the Brainerd City Administrator and City Planner.

Trailhead program elements include:

- Gathering spaces of varying sizes (amphitheater for 250, plaza for 100, river steps for 50)
- Flexible parking
- Stormwater management
- Seating options (benches, chairs, walls, steps)
- River access
- Multi-seasonal programming
- Wifi
- Trail connections/trailhead
- Bike fix station
- Public art
- Wayfinding
- Interpretation
- River views
- Education space/outdoor classroom
- Restrooms (seasonal vs. permanent)
- Flexible for future uses/ phases

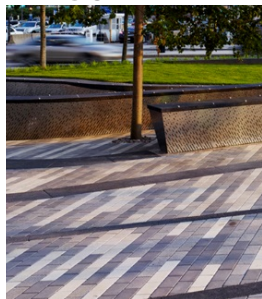
### PRECEDENT IMAGES ILLUSTRATING SEVERAL KEY PROGRAM ELEMENTS



ICONIC LIGHTING



PET-FRIENDLY DRINK-  
ING FOUNTAIN



UNIQUE PAVING PATTERN



WAYFINDING



PUBLIC ART



## MISSISSIPPI LANDING TRAILHEAD CONCEPT PLAN VIEW

This new riverfront trailhead is envisioned as a place that connects Brainerd to the mighty Mississippi. Drawing residents and visitors alike, the trailhead will serve as a destination and entry to the future trail along the Mississippi River. People will come to the riverfront trailhead to connect: to neighbors, to the river, to future and present trails, to new friends and new ways of seeing Brainerd and the Mississippi. Visitors can gather at the “eddy plaza”, which includes a circle of reinforced turf designed to support crowds and vehicles, and is surrounded by a variety of seating options.

Visitors can also get closer to the river from a series of steps that work their way toward the waters' edge. The trailhead space also takes advantage of the adjacent hillside, providing a natural amphitheater, at the top of which are stunning views of the river and cityscape. Sustainable features include a large filtration garden that cleans stormwater from roads and parking lots before it enters the river, permeable paving, and iconic, high efficiency lighting.