



BRAINERD RIVERFRONT MEETING

Nov 1, 2018

3:00–5:00 p.m.

Brainerd Lakes Chamber of Commerce - 213 South 5th Street
Brainerd, MN 56401

Our Vision – Maximize our Mississippi Riverfront by creating recreational, economic and cultural opportunities for Brainerd's residents and visitors.

AGENDA

1) General Updates

- a. Welcome new members to the committee
(Ross Ladehoff)

2) Project Updates

- a. Mississippi Landing
- b. Riverfront Trail Feasibility Study
- c. Rotary Riverside Park

3) October Meetings

- a. River to Rails
- b. Cuyuna Lakes Trail Association

4) BRC Working Session and Priority Project Overview

- a. Review project titles and terminology
 - i. Mississippi Landing (priority 1)
 - ii. Riverfront Trail (priority 2)
- b. Draft a Legislative Update
 - i. Deliverables

5) Committee Events for 2019

- a. Great River Run
- b. Community Kayak Paddle
- c. East River Road Art Walk

6) Other



BRAINERD RIVERFRONT Legislative Update Working Session

October 22, 2018, 5:30 – 7:00 p.m.
Last Turn Saloon

Attendees: Holy Holm, Ashley Storm, Ross Ladehoff, Jennifer Jacquot-Devries, Jim Roelofs, John Forrest, Ashley Kaisershot

The priority of the Brainerd Riverfront Committee is to provide access to the Mississippi River.

I. OVERVIEW AND PURPOSE

The City Administrator requested an update from the BRC to keep area legislators updated on our progress and to share how we've reacted to the advice/feedback as a part of the last bonding session. A small promotional video will be created to share with our legislators but also to area partners and our following base. A [draft](#) vision document was reviewed and provided the basis for our discussion.

II. PRIORITY PROJECTS

a. The first and main project that the Brainerd Riverfront Committee will focus on is the "Mississippi Landing," a trailhead located at White Park.

- i. Riverfront Coordinator to research if the city formally recognizes White Park as a city park. Research will be conducted on who maintains the parcel(s) i.e., maintenance snow removal, etc. Coordinator to begin research how to dedicate the parcel. Currently the parcel(s) are owned by the City of Brainerd and ISD 181.
- ii. The Mississippi Landing will contain the following elements:
 - *Access to the water
 - *Public art
 - *Improve water quality
 - *Outdoor classroom
 - Trail connection/trailhead
 - Canoe landing
 - Bike fix it station
 - Multi-seasonal programming.
 - Outdoor green space

() indicates priority program elements.*

b. The second effort of the Brainerd Riverfront Committee will be providing a riverfront trail along the length of the district (from Washington/210 down to Rotary Riverside Park).

- i. The committee will continue to seek local dollars to fund the remaining cost of the [trail feasibility study](#). The study will focus on possible trail alignments, intersection design, property evaluation, and on-street bicycle solutions to develop a bikeway corridor along the length of the corridor.
- ii. The trail will offer the following elements:
 - i. A means to connect the park and trail network, not only starting at the river, but the city as a whole
 - ii. Viewing platforms
 - iii. A connection to the river
 - iv. Historical aspects
 - v. Signage and wayfinding
 - vi. Active living opportunities

III. DELIVERABLES

a. November 14 – Legislative Update

- i. A tentative meeting is scheduled for November 14th for area legislators to meet with members of the City of Brainerd and learn of the expansion of the Cuyuna Lakes Trail Association footprint. The BRC is requesting to be a part of this meeting.

b. Video

- ii. As a part of the message that will be shared with our legislators, in a format that the City Administrator chooses, a video will be used to highlight the priorities, project identification and terminology/project names.

Encl.

[Brainerd Riverfront Design Report – Concept Plan](#)

Version BRAINERD RIVERFRONT

PROPOSED NARRATIVE 10/21/18 (VERSION 2)

The vision driving the Brainerd Riverfront Project is to maximize our Mississippi Riverfront in a way that will create recreational, economic and cultural opportunities for Brainerd's residents and visitors.

The geography and location of the Mississippi River is an integral part of Brainerd's history, providing economic and cultural benefits for the community. The town thrived for years as a railroad town, then a paper mill town and now a center of regional commerce.

The Mississippi Riverfront Project is seeking to invigorate the community and to engage the resources to restore the Riverfront as an essential element of our community's health.

Beginning in 2014, there has been an effort to leverage the resource of the third largest river in the world to spark an economic revival and create a community poised to attract and retain future generations of workers and residents. Brainerd joins cities such as St Cloud, Duluth and the Cuyuna Range area who are turning to their natural resources to spur economic growth and position themselves for brighter futures.

In 2015 the Mississippi Partnership Plan identified many opportunities to connect Brainerd's neighborhoods and the downtown business community to the river using trails, parks and other amenities. Currently, key projects have been identified and funding sources sought to bring these plans to reality.

Success hinges on building connections within Brainerd to its five miles of riverfront and to capitalize on the town's position as a regional trail hub connecting multiple trails including the Paul Bunyan Trail, the Cuyuna Lakes Trail, the Cuyuna Recreation Area to the northeast and the Crow Wing State Park Trail to the south.

The proposed Mississippi Station/Landing is a key element to create this connection. This riverside facility will tie regional trails together - providing a trailhead and parking for the Cuyuna Lakes Trail - offer scenic access to the water, provide the local schools with an outdoor classroom and give residents and visitors a place to gather thus maximizing our Mississippi Riverfront in a way that will create recreational, economic and cultural opportunities for Brainerd and the entire region.

Mississippi Landing at White Park

Mississippi Landing in Downtown Brainerd will act as a trailhead for regional bike trails and as a community gathering place that offers river access, green space, an outdoor classroom for area high school and college students, and an amphitheater for music and theater performances.

Bringing this vision to life will expand economic, cultural, and recreational opportunities for Brainerd residents and the thousands of tourists who visit the region every year.

Imagine expanded local bike trails that all lead to one dynamic, community location in Downtown Brainerd, where nearby restaurants and shops provide food and entertainment, where families gather on a sunny afternoon to enjoy one of the area's grandest natural resources.

Behold: Mississippi Landing.

Mississippi Landing Amenities:

- River access
- Canoe/kayak landing
- Green space for families and pets
- Gathering spaces
- Varied seating options
- Outdoor amphitheater
- Outdoor learning center
- Trailhead for regional bike trails
- Bike repair station
- Public art
- River views
- Storm water management

A proposal is currently pending to grant \$40,000 for a feasibility study to get the specifics in order. Another \$60,000 is needed to complete this study and finalize project plans and costs.

It is estimated that the Mississippi Landing project will cost \$2.4 million to bring this vision to life. Funding and completing the feasibility study are essential next steps.

MISSISSIPPI RIVER PARTNERSHIP PLAN

BRAINERD RIVERFRONT IMPLEMENTATION

PHASE ONE



DECEMBER 2017



INTRODUCTION

Brainerd's Housing and Redevelopment Authority (HRA), the City of Brainerd, the Brainerd Riverfront Committee, and the community's public and private sectors are collaborating on a multi-phased effort to implement the Mississippi River Partnership Plan.

The Partnership Plan was developed for The City of Brainerd by the University of Minnesota Center for Rural Design (CRD) in 2015. It aimed to develop a riverfront design plan for a two-mile section along the Mississippi River from Washington Street to Little Buffalo Creek in Brainerd. The CRD created design ideas based on priorities established by a riverfront steering committee, which were presented and approved by the City Council.

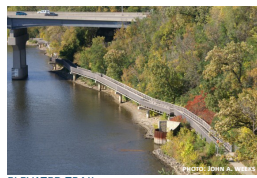
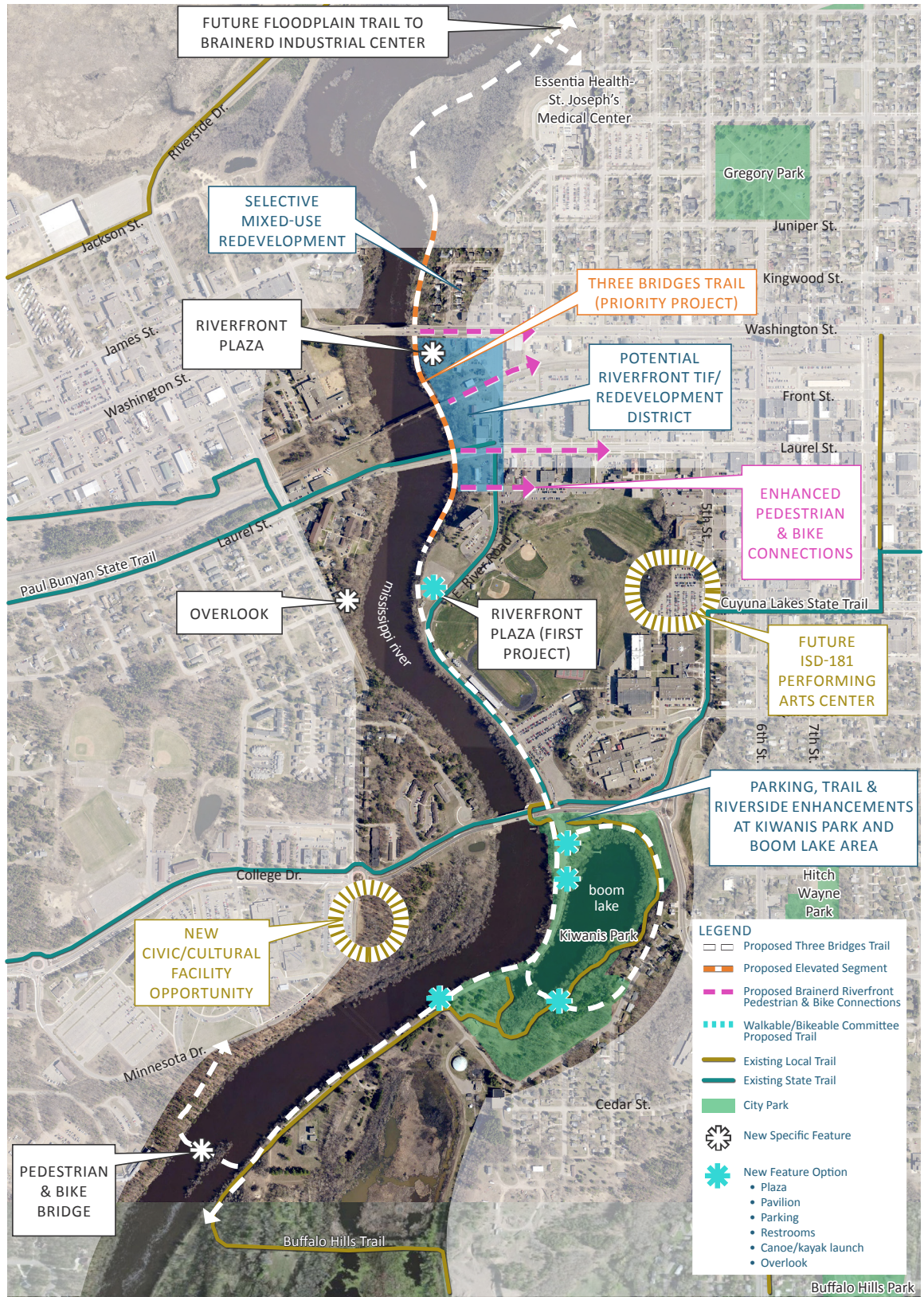
Following this process, the City was awarded a Difference Maker Grant from the Brainerd Lakes Area Community Foundation to build on the Mississippi River Partnership Plan and take steps towards implementation, with the ultimate goal of connecting Brainerd and its residents and visitors to the Mississippi River.

The Brainerd Housing and Redevelopment Authority was commissioned to implement the \$100,000 grant over a three year period (\$33,000 per year) on behalf of the City, and appointed a committee to provide feedback and oversight of the riverfront improvement efforts.

The first year's goal was to identify a first phase project to be launched in 2017.

Brainerd Riverfront projects identified for implementation build upon the goals and design plans set forth in the Mississippi River Partnership Plan. Proposed Riverfront trails, features, and other projects are identified at right.

RIVERFRONT PROJECT IMPLEMENTATION



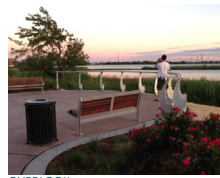
ELEVATED TRAIL



ON-GRADE TRAIL



GATHERING



OVERLOOK



SEATING/GATHERING



MARKER

FIRST PHASE PROJECT - MISSISSIPPI LANDING TRAILHEAD

With input from the Riverfront Committee, the City, community members, and area stakeholders, the first project identified for implementation is the Mississippi Landing Trailhead located west of East River Road between Laurel Street and College Drive. The Partnership Plan also identified a feature at this location, the design of which was informed through a programming workshop facilitated by SEH with participation from members of the Riverfront Committee and City staff, including the Brainerd City Administrator and City Planner.

Trailhead program elements include:

- Gathering spaces of varying sizes (amphitheater for 250, plaza for 100, river steps for 50)
- Flexible parking
- Stormwater management
- Seating options (benches, chairs, walls, steps)
- River access
- Multi-seasonal programming
- Wifi
- Trail connections/trailhead
- Bike fix station
- Public art
- Wayfinding
- Interpretation
- River views
- Education space/outdoor classroom
- Restrooms (seasonal vs. permanent)
- Flexible for future uses/ phases

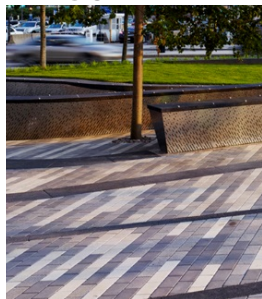
PRECEDENT IMAGES ILLUSTRATING SEVERAL KEY PROGRAM ELEMENTS



ICONIC LIGHTING



PET-FRIENDLY DRINK-
ING FOUNTAIN



UNIQUE PAVING PATTERN



WAYFINDING



PUBLIC ART



MISSISSIPPI LANDING TRAILHEAD CONCEPT PLAN VIEW

This new riverfront trailhead is envisioned as a place that connects Brainerd to the mighty Mississippi. Drawing residents and visitors alike, the trailhead will serve as a destination and entry to the future trail along the Mississippi River. People will come to the riverfront trailhead to connect: to neighbors, to the river, to future and present trails, to new friends and new ways of seeing Brainerd and the Mississippi. Visitors can gather at the “eddy plaza”, which includes a circle of reinforced turf designed to support crowds and vehicles, and is surrounded by a variety of seating options.

Visitors can also get closer to the river from a series of steps that work their way toward the waters' edge. The trailhead space also takes advantage of the adjacent hillside, providing a natural amphitheater, at the top of which are stunning views of the river and cityscape. Sustainable features include a large filtration garden that cleans stormwater from roads and parking lots before it enters the river, permeable paving, and iconic, high efficiency lighting.



MISSISSIPPI LANDING TRAILHEAD CONCEPT PERSPECTIVE VIEW

While the trailhead's location, size shape and features have been informed by community input, its design is conceptual. The images shown illustrate the overall nature or character of the space. Further work is needed to determine final trail alignments, connections, and other potential features such as public restrooms and public art. Further work requires the development of a detailed physical survey of the site and collection of soil borings on which to base landscape architecture and engineering design refinements. More in-depth community engagement may also be desired to establish partnerships for programming reoccurring activities and special events to keep the trailhead activated throughout the seasons.

PRELIMINARY CONCEPT COST ESTIMATE

Hardscape	\$ 685,610
Vegetation/Irrigation	\$ 69,540
Furnishings	\$ 233,500
Public Art	\$ 100,000
Parking	\$ 444,000
Restroom Building	\$ 400,000
30% Contingency	\$ 579,795
Design, Engineering, Construction Administration	\$ 350,000

Total \$ 2,862,445

